



Kansas Turnpike Authority Update

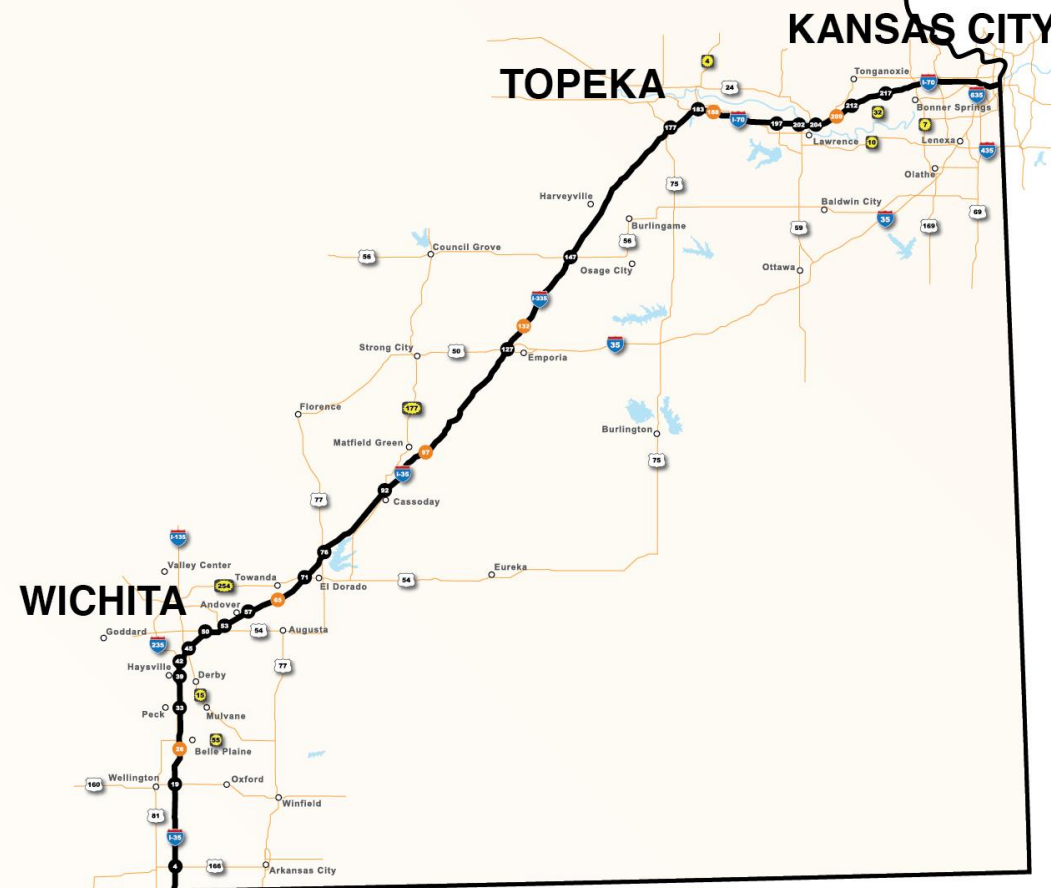


69th Annual Asphalt Paving Conference December 4th, 2025



236 Miles Interstate
1000 Lane Miles
I-70, I-470, I-335, I-35

350 Bridges
6 Service Areas
42 Toll Zones
9 Maintenance Facilities

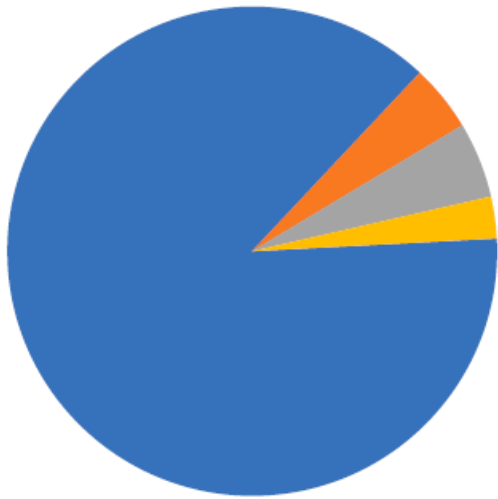




Fiscal Year 2026 – Budget Overview

KTA REVENUES

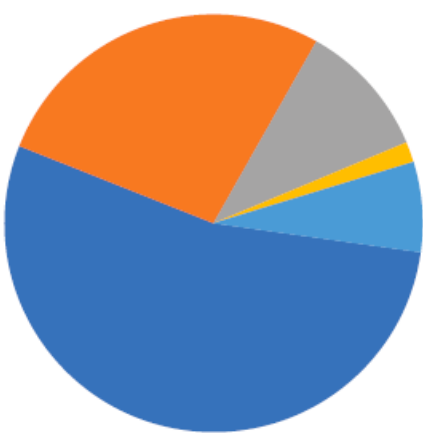
\$153.1 MILLION



- \$134.2M **88%** Toll Revenue
- \$6.7M **4%** Concessionaire Rentals
- \$7.7M **5%** Investments
- \$4.5M **3%** Miscellaneous

KTA EXPENDITURES




\$143.7 MILLION



- \$77.1M **54%** Operations
- \$38.9M **27%** Replacement Reserves
- \$15.6M **11%** Additional Projects
- \$2.3M **2%** Major Capital
- \$10M **7%** Debt Service



Pavement Preservation

-  Lane miles full extent Good (89.8 %)
-  Lane miles full extent Fair (10.0 %)
-  Lane miles full extent Poor (0.1 %)





Kansas Turnpike Authority Lane Miles (Mainline) by Type

91.0%	909.9 Lane Miles	Asphalt Pavement
3.7%	37 Lane Miles	Bridges
	46 Lane Miles	Conc. Pvmt. (I-70 East of K-7)
5.3%	5.8 Lane Miles	Conc. Pvmt. (Terminals at 17, 183, 217)
	<u>1.3 Lane Miles</u>	Conc. Pvmt. (42 Toll Zones)
	1000 Lane Miles	

Bridge Preservation



KTA Bridge Condition Summary (2023 Inspection Data)

Total Deck Area (sq ft) = 2,945,905

Poor 23,893 0.8%

Fair 216,688 7.4%

Good 2,705,324 91.8%

2023 KTA Bridge Condition
All KTA Bridges

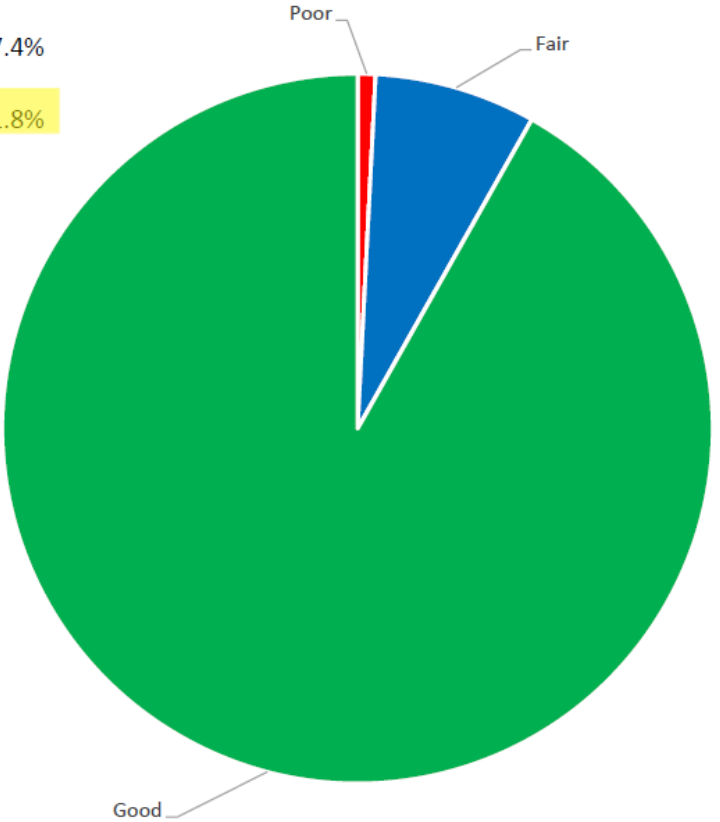
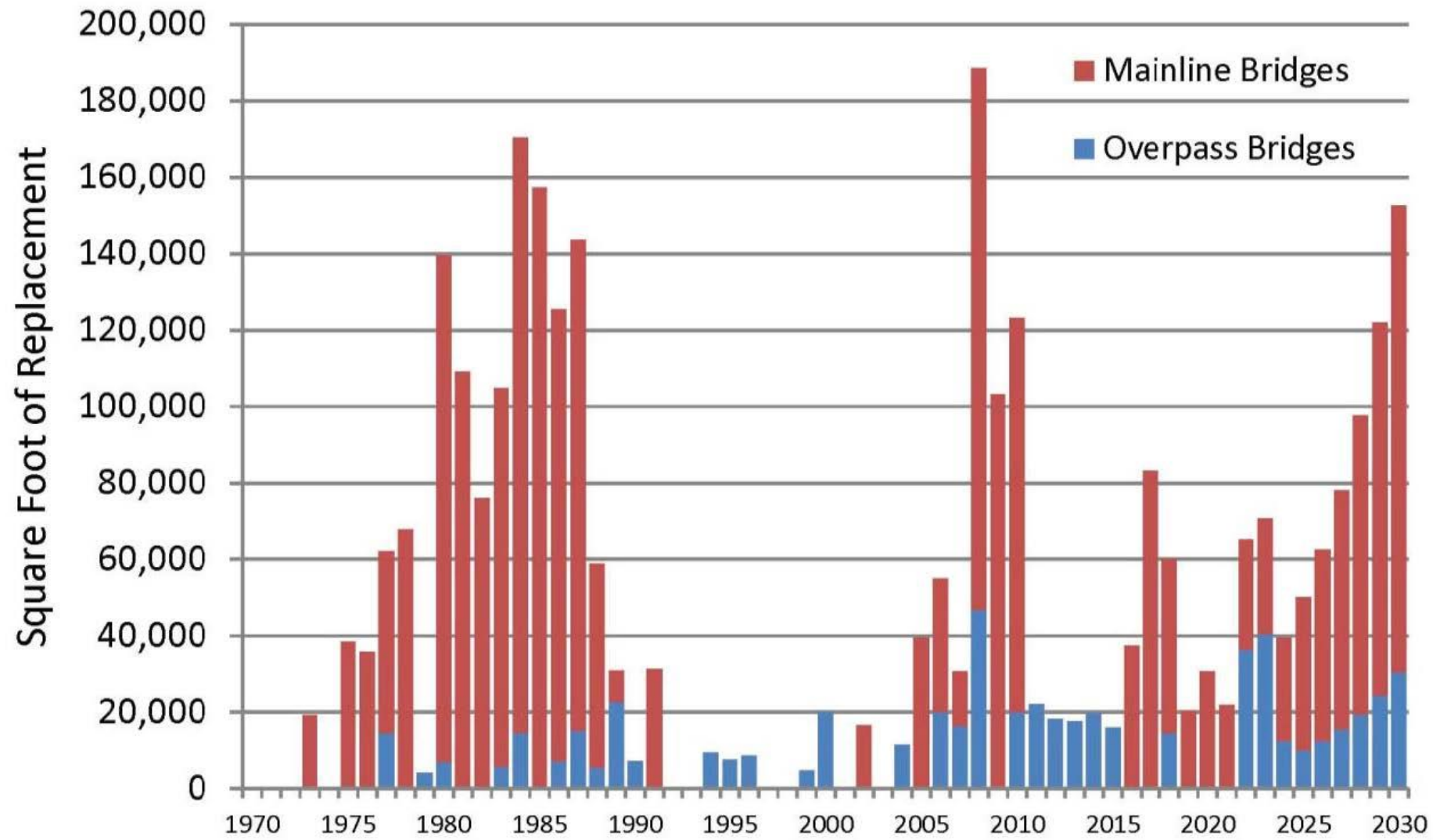


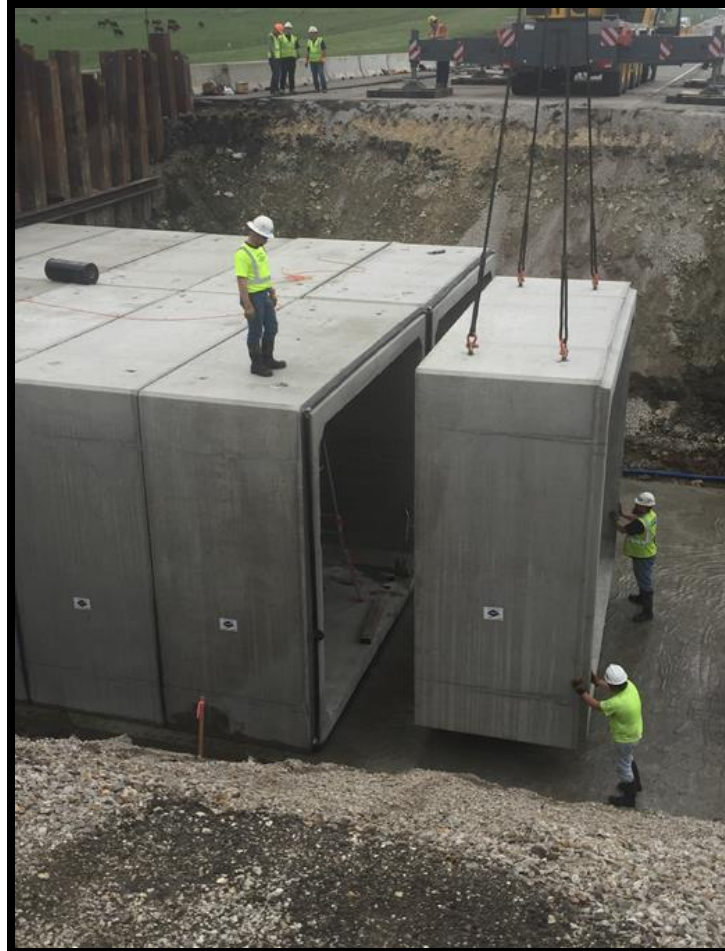


Figure D-3: Year of Deck Replacement on Mainline and Overpass Bridges





Drainage Improvements (Phase 1)





Phase 2 Drainage Screening - Results

- Enhanced analysis reduced 53 deficient culverts to 29 at 50-yr event and 9 at 100-yr event
- Allows for targeted programming and future project selection
- More KTA drainage improvements to come

Table 5.2 **Enhanced Modeling Results**

Event	Deficient Culverts	Adequate Culverts
10-yr	2	51
25-yr	3	50
50-yr	29	24
100-yr	9	44

Original Design Criteria

Vertical Clearance = 15'-0"







Bridge Vertical Clearance Improvements 2016-2024 Summary

Round #1 Bridge Raising	11
Round #2 Bridge Raising	11
Round #3 Bridge Raising	11
Round #4 Bridge Raising	11
Round #5 Bridge Raising	2
Round #5A Bridge Raising	1
Bridge Raise, Rehab. and Reconst. Projects	22
<u>Overhead Bridges Removed</u>	<u>3</u>
TOTAL	72



Added 150+ Truck Parking Stalls (2016-2021)



Topeka Service Area (MM 188)



Towanda Service Area (MM 65)



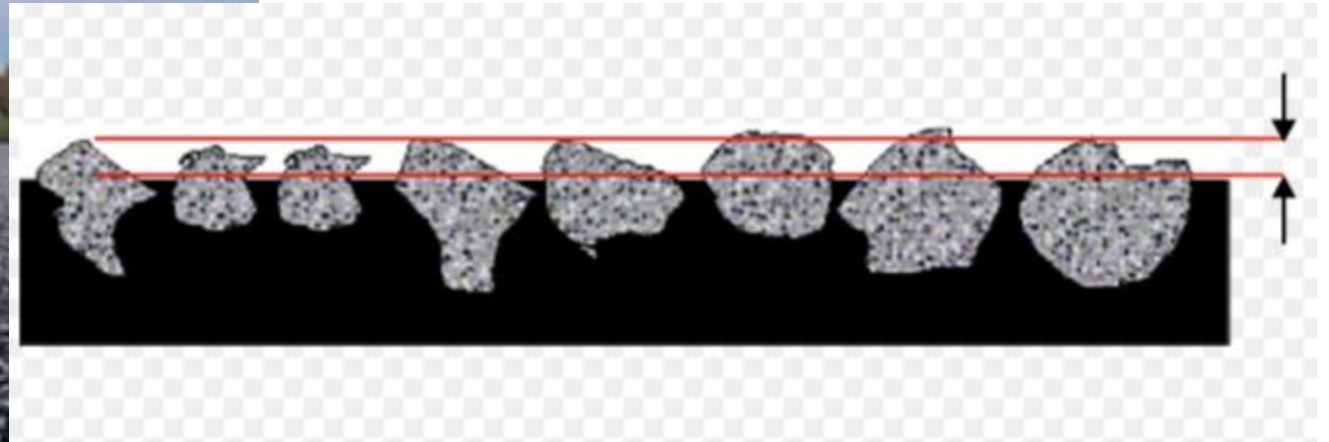
Belle Plaine Service Area (MM 26)



Guardrail/Barrier Safety Improvements

- Modernizing or removing guardrails & barriers
- Focused on box culverts and overhead bridge locations
- First contract from OK to Wichita completed 2024
- Second contract let for segment from Wichita to El Dorado

Skidabrader



High Friction Surface - Granite



MM 105



MM 103

High Friction Surface (HFS) using Calcined Bauxite for Aggregate



I-35 at MM 12.9



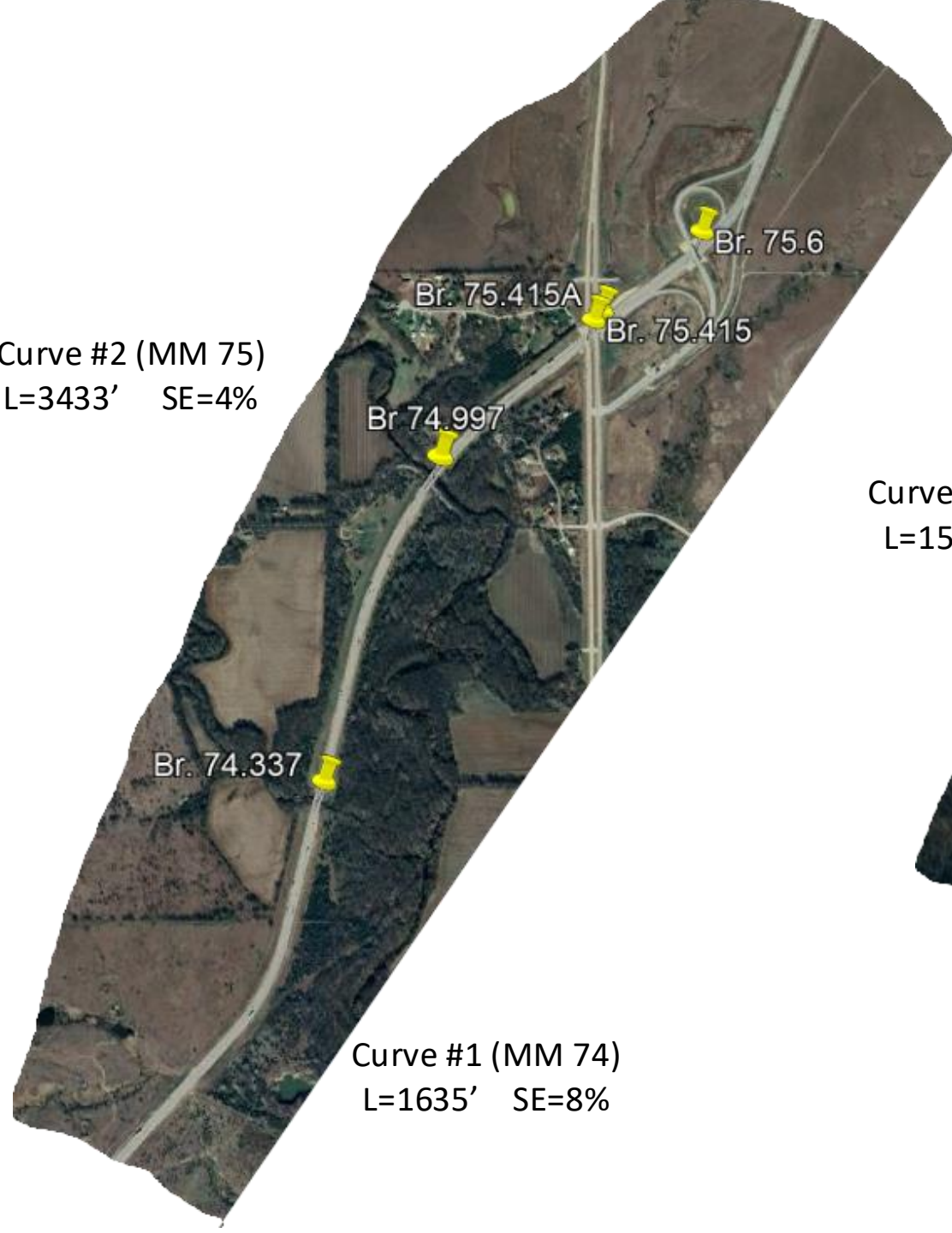
Before and After (HFS) Friction Data

	Improvement Avg SN	Material	Adjacent Avg SN	Percent Improvement
103 NB	67.9	Granite	35.2	93%
103 SB	67.9	Granite	34.7	96%
105 NB	66.3	Granite	32.1	107%
105 SB	66.6	Granite	34.1	95%
76 SB	43.2	SKA	39.7	9%
182 SB	59.0	SKA	45.02	31%

Horizontal Curves

“Targeted Improvements”

Curve #2 (MM 75)
L=3433' SE=4%



Curve #1 (MM 74)
L=1635' SE=8%

Curve #1 (MM 164)
L=1551' SE=8%



Curve #2 (MM 165)
L=1516' SE=8%

“Targeted Improvements”

- Improve High-Side Super Elevation
- Apply High Friction Surface (HFS) to Low Side
- Curve Advisory Speed Signing
- Median Drainage Improvements
- Side Slope Improvements
- Rumble Stripe
- Guardrail Installation



Cashless tolling: July 1, 2024

- Safety
- Customer convenience and service
- Operational considerations
 - Aging equipment, need for investment
 - Aging workforce
 - Efficiency

I-70 (KTA) / K-10 Interchange (KDOT Project No. 10-23 KA-3634-02)

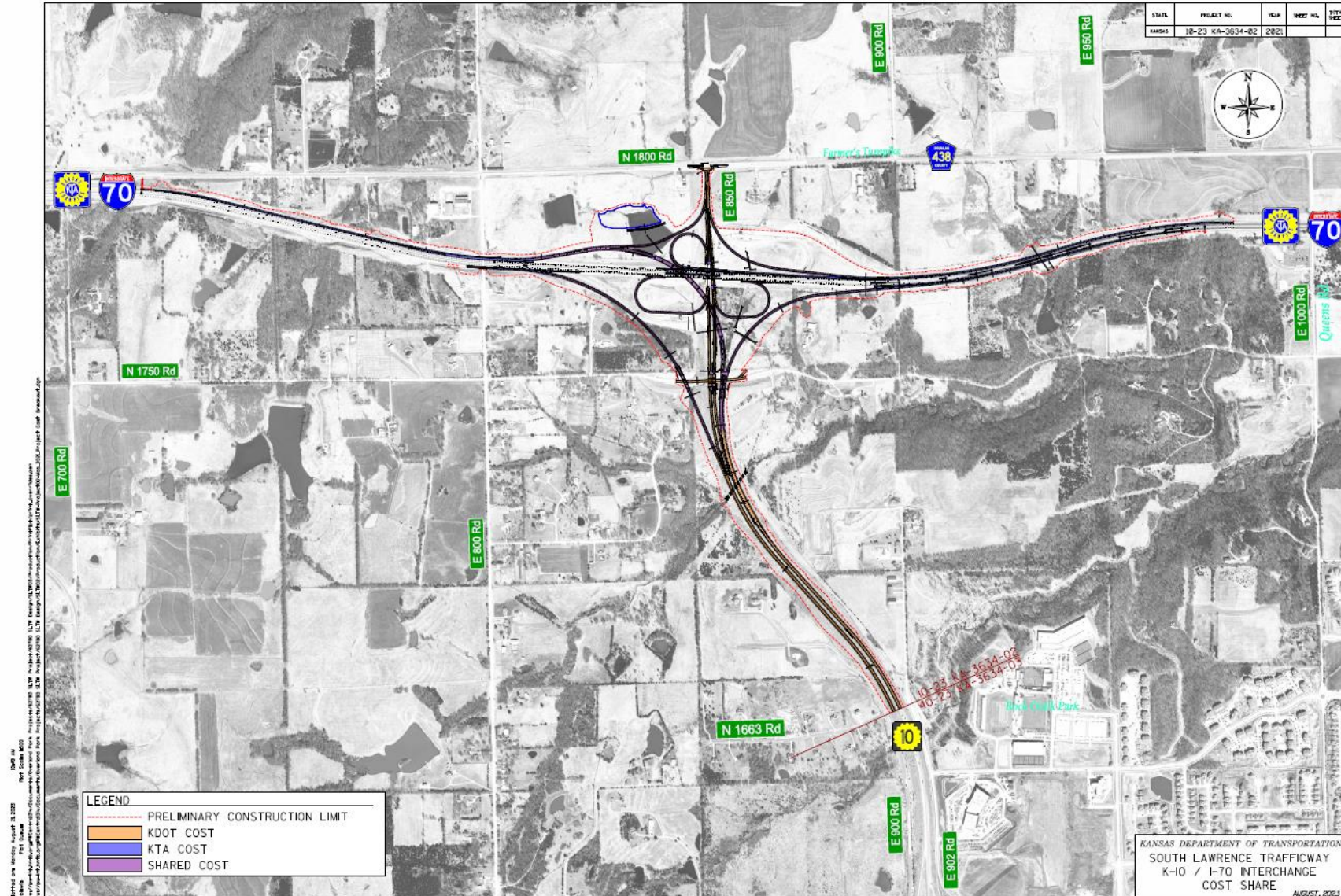
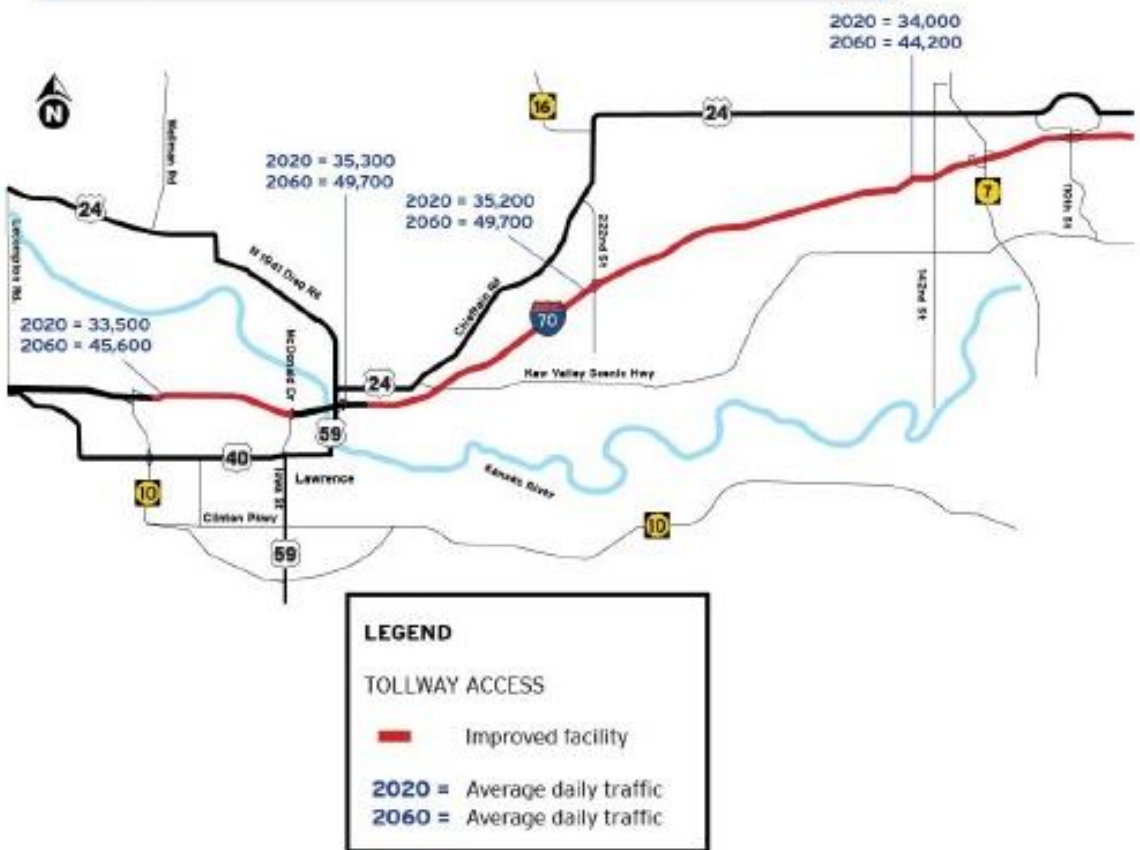


Figure D-14: I-70 Widening Concept



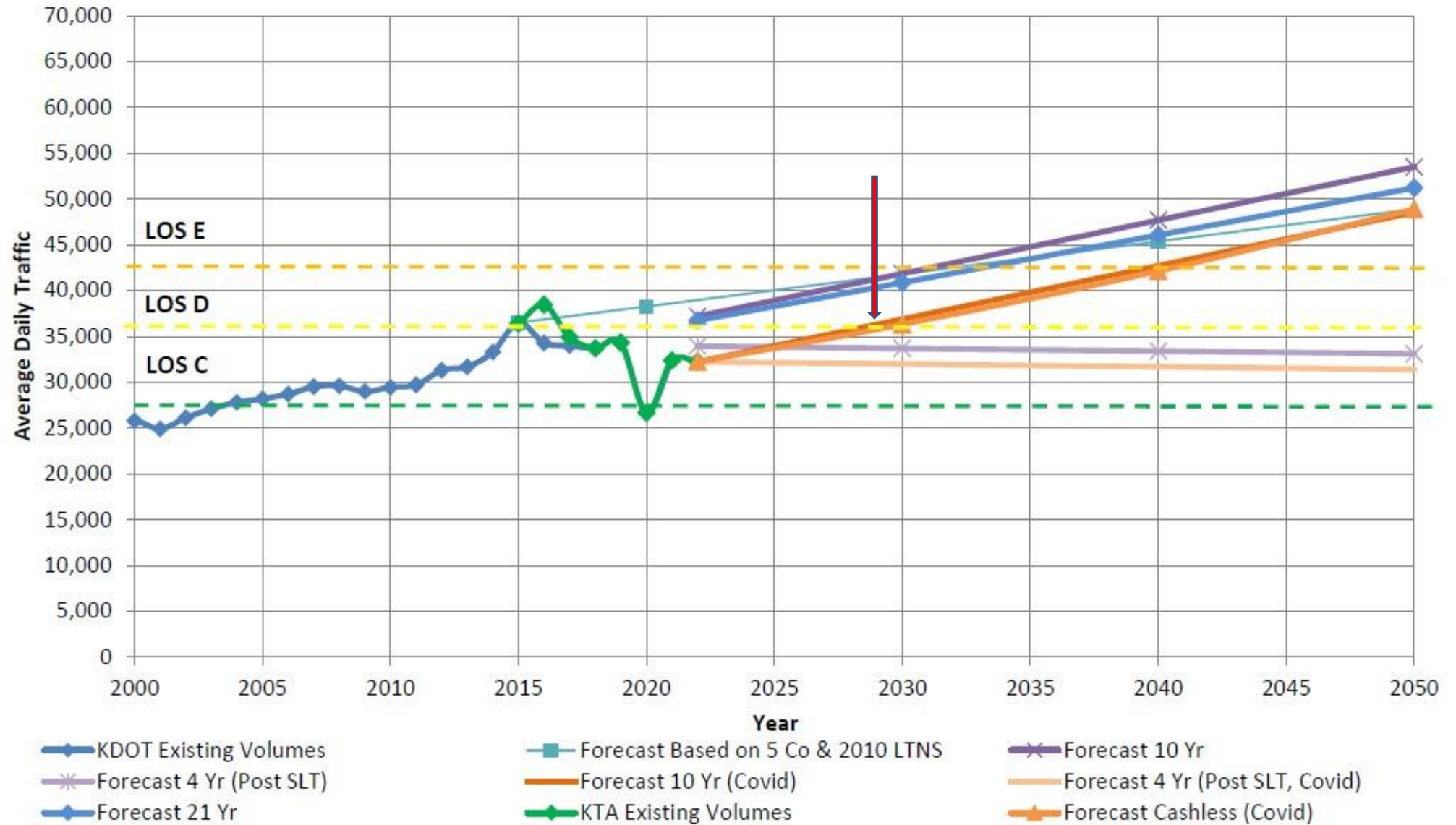
I-70 Widening

MM 204.6 to MM 211.6	7 Miles
MM 211.6 to MM 224.6	13 Miles
<hr/>	
MM 197.8 to MM 201.8	4 Miles



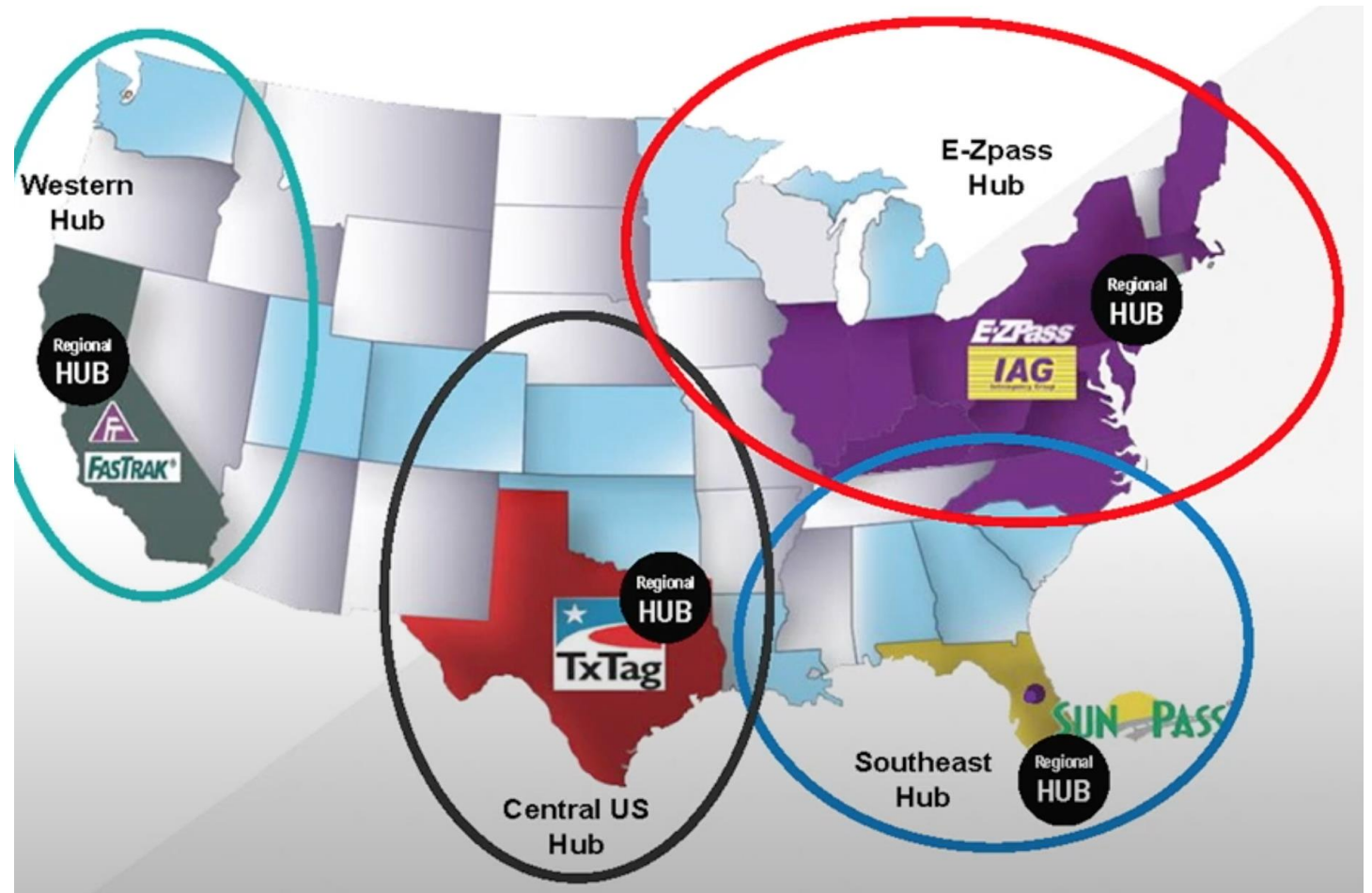
I-70 ADT Growth Projections - East Lawrence to Tonganoxie

Sept. 2022



Nationwide (System) Compatibility

- Using a HUB approach to increase compatibility and minimize peer-to-peer agreements



69 *EXPRESS*

- Express toll lane will add capacity on US69 through Overland Park
- Additional lane is intended to relieve congestion on the busiest 4-lane highway in the state
- Partnership between KDOT, Overland Park and KTA
- KTA will serve as the toll partner on the project – providing toll experience, back office support and customer service
- On track for 2026 opening
- Learn more at www.69express.org



Loves Service Area Improvements

- Speedco service shop at Topeka service area
- CAT Scale additions proposed at multiple service areas
- Dog Parks, RV stalls
- Additional truck parking
- KTA installing updated equipment for Truck Parking System
 - Will re-light advance parking signs on KTA

Loves Speedco (Topeka Service Area)





Loves Dog Park (Topeka Service Area)





Cody Vandevord, P.E.
Engineering Program Manager
Cell: 785-409-4737
cvandevord@ksturnpike.com